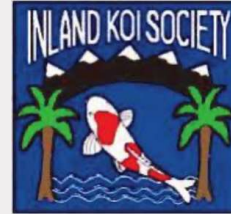


The Inland Koi Connection



THE OFFICIAL
NEWSLETTER
OF **IKS**
ISSUE 307
AUGUST 2024

THE MONTH OF AUGUST

WWW.INLANDKOISOCIETY.ORG

REMINDER!!!

THERE IS NO MEETING FOR
THE MONTH OF AUGUST!!

DUE TO AUGUST BEING ONE OF
THE HOTTEST MONTHS OF THE
YEAR, WE DECIDED THAT WE WILL
BE TAKING A BI MONTH AND WILL
REGROUP AT OUR **NEXT MEETING**
ON THE **29TH OF SEPTEMBER.**

WE HOPE YOU ENJOY THIS
SHORT BREAK AND WE CAN'T
WAIT TO SEE YOU ALL AT THE
NEXT MEETING!!

Lightning Strikes

It is not common, but it does happen. Lightning can strike your pond and kill your Koi. This photo shows the result of a lightning strike in a local pond a few years ago. Thirty two fish met instant death when lightning struck the pond. Only a few very small fish survived the strike. The larger fish are often die first because their larger body mass absorbs the greatest amount of electricity. Lightning rods installed around the pond and connected to ground can work for some ponds. Loose electricity in the pond can have strange effects. It will go through any Koi that are in its path to ground. Sometimes, only a single fish is affected, and the result is seen as a bent back, but no deaths. Other times, like in the picture below, many Koi are killed.



Fertilizers, Insecticides and Herbicides

During the summer, many of us apply fertilizer to our lawns in order to get an early start on grass development. This is a reminder that while applying fertilizers or other chemicals to your yard, avoid getting any of it into the pond water. Also avoid using insect sprays near the pond. Wind can sometimes carry spray or even granules toward the pond and contaminate the water surface. If you have a lawn maintenance person, make sure to warn them to avoid getting fertilizer and insect spray near or into the pond water. Check your pond edges to make sure the soil outside of the pond slopes away from the pond and not toward it. Pond liner should be folded up around the edges to create a barrier. Heavy rains can cause chemicals to run into the pond when the slope and liner does not prevent it. Lawn chemicals and insect sprays can cause massive fish kills in ponds.

Avoid roof overhangs above a pond. Rain water washes all sorts of contaminants off of the roof. When these impurities are washed into the pond, the water becomes contaminated. Always keep the bottom of the pond clean. You should be able to see the liner everywhere in the pond. Any decayed material settling on the bottom can result in hydrogen sulfide gas, which can damage gills and can destroy the Koi's immune system, which makes them more prone to ulcers, parasite damage and water quality faults.

Electrical Current in Water

Sometimes faulty equipment such as submersible pumps or broken ultraviolet lights can emit electricity into a pond. If you see and/or hear your fish jumping out of the water, check any electricity source, and especially submersible pumps, for possible damage. If electricity is detected, the GFCI is not working properly and should be replaced immediately. If you currently don't have all pond electrical equipment – even if not submersed in the pond – on a GFCI circuit, install them immediately. Regular circuit breakers may be replaced with a GFCI breaker, or you can use GFCI extension cords.



Power Failures

Power failures are probably the most common cause of Koi death. Ponds are designed such that pumps and the filtration system run all the time. If air and water pumps are interrupted, fish mortality will occur.

- Fish cycle water through their gills to provide their bodies with oxygen and to expel carbon dioxide and ammonia. Cold water holds much more oxygen than warm water. Warm water requires aeration in order to supply enough oxygen for the fish. Waterfalls or streams returning to the pond can provide some aeration, but most ponds should also have air pumps and air stones. If electricity is interrupted even for a short time, fish can die from oxygen starvation. Larger fish will die first, since they require more oxygen than smaller fish. Lack of Oxygen for 30 minutes can kill a large Koi, and if the condition exists for several hours, all Koi will die. There are very few things that can kill all the Koi in the pond overnight, but oxygen deprivation is first on the list. Rather than a single air pump, always run 2 smaller air pumps so if one fails, the 2nd pump will keep the Koi alive until equipment can be replaced. And, always run each pump on a different electrical circuit. GFCI's can trigger in a storm, and stop electricity to an air pump. If one circuit stops working until the GFCI can be reset, the other circuit and 2nd air pump will keep the Koi alive.
- Storms or fires can cause power loss to an entire community for extended periods. If your neighborhood experiences power failures, you might consider the purchase of a backup generator. Make sure a generator is tested and is run at least once a year, or it may not start when needed.

pH

pH is the measure of acidity (versus alkalinity) of the pond water. A pH of 7.0 is considered neutral; while below 7.0 is acidic and above 7.0 is alkaline. Koi flourish in pH values from 5 to 9 without any problem. Koi subjected to water outside this range of pH values will experience severe stress and can die. Normally the pH value of pond water takes on the value of the source water and is not a problem.

Carbonates stabilize pH, and can be measured with a KH test kit. If KH is below 100 ppm, add baking soda. Carbonates are constantly consumed by every living molecule in the pond (all are carbon-based life forms), and thus KH is always decreasing and needs to be monitored.

New concrete ponds can have a pH as high as 12.0 or above because pond water leaches the carbonates out of the concrete used in construction. Muriatic acid is used to lower the pH to a stabilized value. It generally takes several days for stabilization to occur, and Koi should not be placed in the pond until a stable pH has been measured for at least 2 weeks.

Low pH, below 6.0, can be the start of a pH crash which will kill every living thing in the pond. Again, pH should be raised by adding baking soda to the water.



2024 Board of Directors

Officers

- President –
Scott Zehm ~ c 951.237.2508
scottzehm@eee.org
- Vice President – Location Chair
Rob Fales ~ 951.279.0181
- Secretary –
Monica Dirac ~ c 909.756.1944
monicadirac@aol.com
- Treasurer –
Nick Milfeld ~ c 951.892.4269
Nick Milfeld-@inlandkoisociety.org
- Newsletter Editor –
Braelynn Zoetemelk ~ c 951.529.3328

Directors

- **Brenda Aker** ~ 951.316.0263
@inlandkoisociety.org
- **Gavin Alexander** ~ 951.922.5868
gamial@aol.com
- **Tony Coby** ~ 951.486.1816
Jazzman19@gmail.com
- **Deanna Fales** ~ 951.279.0181
@rob_fales@sbcglobal.net
- **Linda Kushner** ~ 951.520.0092
@lindakushner1@gmail.com
- **Larry Leverett** ~ 951.500.2157
@inlandkoisociety.org
- **Theo Zoetemelk** ~ 951.735.9896
@inlandkoisociety.org

Upcoming Events

08

No August Meeting!!!

09

08~ IKS Board Meeting
5:30 PM

Nick and Peggy Milfeld

Interested members are welcome to attend, but please call hosts to let them know beforehand, 951.892.4269

09

22~ IKS Potluck meeting
3:00 PM

Steve and Kelly McHan
Loma Linda CA

10

27~ IKS Board Meeting
12:00 PM

Francine Hoffman

Interested members are welcome to attend, but please call hosts to let them know beforehand, 951.781.8209

10

27~ IKS Potluck meeting
2:00 PM

Francine Hoffman
Riverside CA

11

24~ IKS Thanksgiving Meeting
2:00 PM

Jerry and Pat Mall
Temecula CA



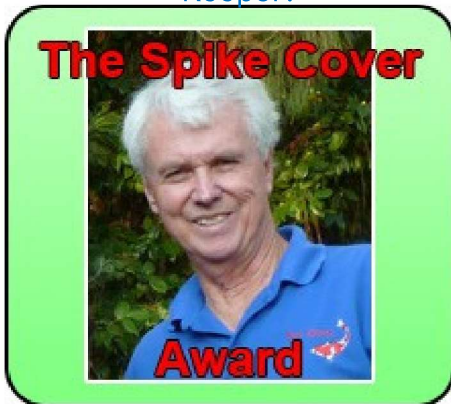
WWW.INLANDKOISOCIETY.ORG



August 2024

Hurry! Nominations Close Sept 1

Do you know an outstanding Koi Keeper?



- One award given each year for **Lifetime Achievement** in the Koi Hobby
 - 2023 was the inaugural year
 - Any K.O.I. Member, or any member of a K.O.I. Member Club can make a nomination
 - Nominations are SIMPLE! Send a paragraph about why you think the person deserves the award
 - Voted on by previous winners and the K.O.I. staff
 - No one can receive the award twice (see list of winners on the web site)
 - Multiple nominations for a single person increase their chances of winning
 - Non-winner names carried over for further consideration for the next 2 yrs.
 - Trophy designed by a new artist every year
- Winner receives an artistic award with plaque, pin and certificate
Learn more at the K.O.I. web site:

<https://koiorganisationinternational.org/spike-cover-memorial-awards>

- Email pattist@snet.net



August 4 Cancelled

Our rep is doing Show Water Quality, and the safety of the Koi comes first!

- Our next Pondsides will be given by Syd Mitchell
 - Check website for date and time
- You might want to brush up on your “English” – see our humorous K.O.I. post on translating British to American:

<https://koiorganisationinternational.org/blog-entry/guide-idioms-used-koi-instructors-british-translations>



TIP OF THE MONTH



Did you know?

KH and TA (t.a.) are the same!

- **KH** means Carbonate Hardness (K comes from German spelling—Kalkwasser Hardness)
- **TA** means Total Alkalinity – which is also measured in Carbonates
- Carbonates absorb acids to keep your pH from crashing – they BUFFER your pond to keep pH stable!
- Carbonates are constantly being consumed by living cells, so the amount available decreases every day. **TEST and keep KH Over 100 PPM by doing water changes or adding Baking Soda**

INLAND KOI

Quality Japanese Koi
& Pond Supply



Importers of high quality
Japanese koi.
Complete line of koi &
pond supplies.

Check out our New
Arrivals page
Shop our Featured
Products
Research all of your
Koi Questions

18122 Mt. Washington St.
Fountain Valley CA 92708

Winter Hours:
Daily 10:30am-5:00pm
Monday - Saturday.



Phone: (714) 438-0087
Website: www.inlandkoi.com
E-mail: inlandkoi@inlandkoi.com

THE BEST QUALITY
Japanese Koi
AT A REASONABLE PRICE!

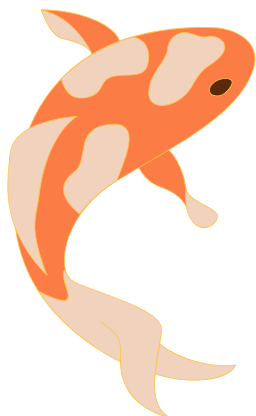
Closed on Sundays



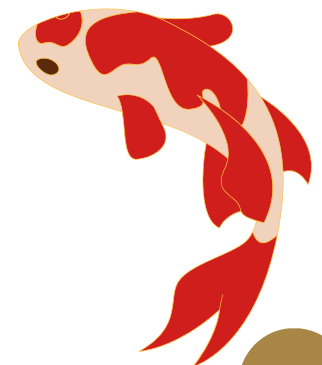
Thank you to **Chien Lee**
of **Nijkawa USA** and to
Iva Gaglione of Ultra
Balance for supplying the
Inland Koi Society with a
supply of nutritional koi
food for its rehoming
program!!!



Thank You!!!



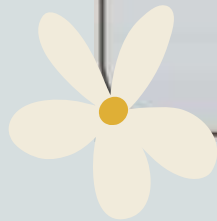
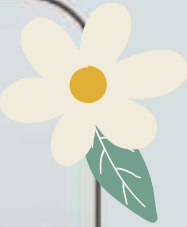
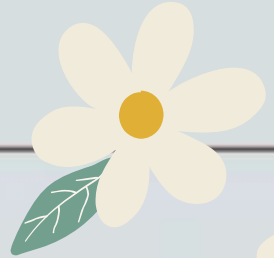
We are in need of
someone with enough
space to house rescue
fish!!! Please see **Scott**
Zehm for more
information.





INLAND KOI SOCIETY
5198 ARLINGTON AVE., #146
RIVERSIDE, CA 92504

Return Service Requested



Visit Our Website: www.inlandkoisociety.org